



2026

DREAMWORKS
THE
PRINCE
OF
EGYPT
THE MUSICAL



presented by

 **SIKICH**®

JULY 10-12 | 15-18

www.themuni.org



When you need care, Memorial Health is

Always on your side

Whether you're looking for a trusted primary care provider or facing something unexpected, we are here for you every step of the way.



Memorial
Health



Celebrating 80 Years of Excellence

Serving Springfield & Central Illinois Since 1946

For 80 years, Sutton's has been the trusted name in home improvement across Springfield and Central Illinois. From roofs to sunrooms, our family-owned team delivers quality craftsmanship and honest service — just as we have since 1946.

**Roofing Siding Windows
Doors Decks Sunrooms
Remodeling**

Free Estimates — Call Today!

(217) 528-3911

suttonsinc.com

Springfield, Illinois

The Springfield Muni is proud to present our 2026 season.

THE SUMMER OF

love

MAMMA MIA!

MAY 29 - 31, JUNE 3 - 6

DIRECTED BY MORGAN KAPLAN & ANDREW MAYNERICH



ALL SHOOK UP

JUNE 19 - 21, 24 - 27

DIRECTED BY KELLY ROBERTSON



Disney/MGM+ THE PRINCE OF EGYPT THE MUSICAL

JULY 10 - 12, 15 - 18

DIRECTED BY WES BRIDGES



Disney FROZEN THE BROADWAY MUSICAL

JULY 31 - AUGUST 2, 5-8

DIRECTED BY ALYSSA & DJ SHULTZ



Disney THE LION KING JR

AUGUST 20-22

DIRECTED BY TIFFANY WILLIAMS

This program is partially supported by a grant from the Springfield Area Arts Council through state funds provided by the Illinois Arts Council.



For more information about our season visit themuni.org.

The Springfield Municipal Opera and Siskich

Production of

THE PRINCE OF EGYPT

THE MUSICAL

Music & Lyrics by Stephen Schwartz

Book by Philip LaZebnik

Based on the DreamWorks Animation Film

Premiere production at TheatreWorks Silicon Valley and
Original West End production directed by Scott Schwartz

Originally produced by

DreamWorks Theatricals, Michael McCabe and Neil Laidlaw
With John Gore, Tom Smedes and Peter Stern, Ramin Sabi,
The Araca Group, James L. Nederlander and Michael Park.

Director

Wes Bridges

Assistant Director

Elijah Sadler

Vocal Director

Donn Stephens

Producer

Michelle Eccles McLaughlin

Orchestra Director

Jacob Pahde

Accompanist

Ron Wojcicki

Stage Manager

Adam Reisch

Costume Designer

Lisa Coakley

Prop Designer

Cate Miller

Set Designer

Wes Bridges

Make-up & Hair Designer

Jacqueline Keysear

Master Builders

Muni Set Committee

Lighting Designer

Kevin Cline

Sound Operator

Jeremy Goeckner

Production Coordinator

Deanna Sullivan

THE PRINCE OF EGYPT is presented through special arrangement with Music Theatre International (MTI). All Authorized performance materials are also supplied by MTI.
www.mtishows.com

ANY VIDEO AND/OR AUDIO RECORDING OF THIS PRODUCTION IS STRICTLY PROHIBITED.

COMMUNITY *Matters*

Your goals. Our community. One future.



Heartland[®]
Bank and Trust
Company

Member
FDIC

SPRINGFIELD

2601 N. Dirksen Pkwy. | 217-787-3100
1925 S. MacArthur Blvd. | 217-787-3100
3601 Wabash Ave. | 217-787-3100

    [hbtbank.com](https://www.hbtbank.com)



It's Time to *fly* **SPI**

Whether you're traveling for business or heading out on a well-earned getaway, start your journey the stress-free way, right here at home.

BOOK AT:
FLYSPI.COM



FREE Parking **LOCAL** Airport
EASY Connections



BOX OFFICE

Muni ticket reservations are handled by MetroTix. Hours: Monday-Sunday 10:00 a.m. – 8 p.m. Tickets are available at all MetroTix locations. To charge by phone, call MetroTix at (314) 534-1111, or online at metrotix.com. On show nights only, tickets can also be purchased at the theater site box office which opens 90 minutes prior to curtain time. Curtain time is 8:30 p.m. for all performances, except Disney's Lion King Jr which is 8:00pm.

CONSUMER ALERT

MetroTix is the only official ticketing agency authorized to sell tickets for events at The Springfield Muni Opera. Tickets on resale websites are often sold above the face value price and are ineligible for assistance in show cancellations or rescheduling or if lost or stolen. Tickets obtained from unauthorized sources cannot be guaranteed and may be fraudulent, stolen, or invalid. The Springfield Muni Opera and MetroTix are not responsible for any tickets obtained through other sources.

TICKET PRICES

Platinum Seating (A-F & N): \$30.00; Gold Seating (G-M): \$26.00; Silver Seating (O-R): \$24; General Admission Lawn Seating: Adults \$15.00, Seniors*/Students*/Children (6-12)/Military*/First Responders* \$12.00 with I.D., Children 5 and under are free. Season subscriptions are also available for \$100. More information can be found at themuni.org/buy-tickets. * *Proof of eligibility required at entry.*

GROUP RATES

Special rates are available for groups of 10 or more and 25 or more. Please call the box office at (217) 793-MUNI (793-6864).

FAMILY NIGHT

Wednesday performances of each production are designated as Family Night. Up to 3 children aged 12 and under are admitted free when accompanied by an adult who has a paid, regular priced ticket for General Admission Lawn Seating.

SENIOR NIGHT

Seniors can purchase reserved seats for Thursday performances for \$20.

LISTENING DEVICES

A limited number of sound enhancement devices are available free of charge for our hearing impaired patrons. These may be checked out from the house manager at the Patio and returned after the performance.

PICNIC FACILITIES

The Muni Pavilion may be rented for a nominal fee. If interested, contact Randy Ragan at 217-836-5881. All other picnic tables are available on a first-come, first-served basis.

BACKSTAGERS

Backstagers offer financial contributions which assist in maintaining the quality of our productions and facility. For more information on joining this special group, see the house manager, or contact us at www.themuni.org.

HOUSE RULES

Photography/Recording – the taking of any photographs and/or audio or video recording of a performance is strictly prohibited. Cell Phones/Texting – Please turn off cell phones during performances. Please refrain from texting, as it can disturb others who are trying to enjoy the show. Smoking and E-smoking are only allowed in designated smoking areas outside the gate.

WEATHER POLICY

In the event of inclement weather, The Muni reserves the right to hold the start of a performance for a maximum of 1 hour. The Muni may interrupt a show for a maximum of 30 minutes before cancellation. If a show has played for a total of 1 hour, rain checks will not be issued. If a show is cancelled and has not played for a total of 1 hour or to intermission, retain your ticket stub. Your reserved seat ticket stub may be exchanged for a seat at a subsequent performance. However, the same seat location is not guaranteed. Patrons holding General Admission tickets may retain their ticket stub or obtain rain checks before leaving the theater. A performance is not considered to be cancelled until an announcement has been made to the audience.

VOLUNTEERING

The Muni is a year-round operation run entirely by volunteers. To join us as a volunteer, please see the house manager, or contact us at www.themuni.org.

board of trustees

Randy Ragan, Chairman
 Tom Appleton, Emeritus
 John Baker
 Marjorie Berchtold
 Dave Britton, Emeritus

Roger Holmes
 Stephan Kaplan
 Mary Beth Maloney
 Dennis O'Brien
 Scott Viniard

board of managers

Kevin Burke III, President
 Anna Sohm, Immediate
 Past President
 Kari Wolf, President Elect
 Mary Matheny, Treasurer

Wes Bridges
 Darrin Burnett
 Jacque Combs
 Josh Craven
 Patty Dirksen
 Kim Diveley
 Duane Fant

Marianne Hankins
 Jim Kaitschuk
 Deb Rudis
 Jeremy Tackett
 Ted Tracy
 Lauren Williams
 Kari Wolf

non-board committee chairs

Auditions Co-Chair: Steve Rotello
 Backstagers Co-Chair: John Clark
 Caretaker: Tom Donelan
 Costumes Chair: Dora Rotello
 Equity Diversity & Inclusion Chair:
 Nicole Pittman
 IT Co-Chair: Mac Warren
 Landscape Chair: Inez Berg
 Personnel Chair: Carla Wilson
 Playreading Co-Chair: Jeremy Goeckner
 Production Chair: Donna Ragan
 Props Chair: Melody Sheehan
 Senior Bus Chair: Gil Opferman
 Site Chair: Mac Warren

**Want to catch your favorite Muni show
 without spending a dime?**

Our amazing VOLUNTEERS get to enjoy
 the show for FREE (snacks included).

Use the QR code below to sign up TODAY!!!



Volunteering is also a great
 way for your student to get
 community service hours!!



As the sun sets, the curtain rises on warm summer nights at The Muni, a summer tradition for 76 years. Welcome to our 2026 season of "Broadway Under The Stars!"

Originally conceived on April 21, 1950, as a not-for-profit theatrical organization, the Springfield Municipal Opera Association transformed a 55-acre wheat field into an outdoor amphitheater.

On opening night, June 17, 1950, thousands of people turned out to see our first production, the operetta *The Merry Widow*.

The Muni, as we became affectionately known, flourished until a series of setbacks in the mid-1950s. A major fire in 1963 destroyed part of the facilities, and another fire destroyed what was left the following year.

With hopes for a rebirth, a test production of *Bye, Bye, Birdie!* was staged in Douglas Park in 1964. The response was so enthusiastic that The Muni was able to rebuild its facility and return to the lake site theater in 1965.

With continued support from our enthusiastic audiences and our dedicated corps of volunteers, The Muni has continued to flourish, becoming one of the largest community theatres in the Midwest. Lavish settings, dazzling costumes and a full orchestra, all are presented under a canopy of twinkling stars. Each summer our audience continues to grow, as we entertain the very best in musical theatre. From families with young children, to teens on dates, or their grandparents, everyone is at home at The Muni.

We hope you enjoy the show.

stay informed!

Keep up to date regarding all things Muni,
visit www.themuni.org

When The Muni was founded 76 years ago, it was through imagination, determination and commitment. The overwhelming support of the Springfield community has played a valuable role in The Muni's beginning and in its future. Helping to ensure that future generations will enjoy The Muni are the Backstagers — a group of individuals and businesses whose financial contributions are a vital component to our success and growth.

Their names are proudly listed on these pages. If you would like to contribute to future improvements at The Muni as a Backstager, please see the House Manager, or contact us at www.TheMuni.org.

We are so lucky to have all of our Backstagers as part of the Muni Magic!

Listing reflects Backstagers contributions received prior to 5-31-2026.

Benefactor Roundtable (\$2,000 +)

Marjorie Berchtold

Greg Jensen & Dr. Kari Wolf

Mike & Beth Hoyle - Kwik-Wall Company

Randy & Donna Ragan

Producer's Circle (\$1,000 +)

Mark & Tara Anderson

Stephan & Paula Kaplan

Bill, Anna, Will, & Alexxia

Tom & Helen Appleton

David & Janice Kerwin

Sinnott

Bonnie Bloome

Marilyn Okon

The Viniard/Clark Family

Margaret Ference

Collins & Mary Anne Pieper

Director (\$750 +)

Pamela Campbell

Goodman Fence, Inc

Conductor (\$500 +)

Jim & Ginny Baker

Charles & Jessica Golitko

Dennis O'Brien & Sue Ellen

Scottie & Diane Beville

Ruth & David Hicks

Finkenbiner

Kevin & Jennifer Burke

Rob & Dorothy Kane

Gil & Ann Opferman

Josh, Gretchen, Emmy, Livy &

Julie & Jim Korte

T. David & Kim Carter Parker

Liam Craven

Dave & Becky Kukuk

Tom & Ann Prather

Tom & Jodi Dart

Losin' It With Sonya Jones

Katy & Jay Roszhardt

Dellert's Paint

J. Richard & Sharon Lyons

Mike & Jinny Sachsenmaier

George Dirksen

Mary Beth Maloney

Steve & Lynn Scott

Wanda Dunkel McGarvey

Penny & Bill McCarty and

Leigh Steiner & David Decker

Echo Electric

Family

Teaman Family

William & Monica Flanagan

Barbara A. McKean

Ted & Betsy Tracy

Patrick Foster & Donna

Doug & Linda Meyer

Vondra Social House

Jerch

Lead Actor (\$300+)

Sharon & William Bell
Bunn
Brenda & Ed Buckles
Barbara Butler
Connie L. Clark
Laura Ann Drennan
Kirtus & Michelle French
Steve & Jeannette
Hassebrock
Dr. Julie Hoffman

Perry & Nadine Kraft
Kevin & Casey Kulavic
Marie Kulavic
John & Sharon Kwedar
Aaron & Judy McEvoy
Gail Noll & John Milhiser
Steve & Lea Patterson
Maria & Gary Robinson
Debbie & George Rudis
Bill & Lori Schlosser

John & Lisa Schneider
Pat & Bob Schroeder
Tim & Melody Sheehan
Bill & Joy Sherman
Dr. Andrea Stonecipher
Barbara Suelter
Terry & Marcia Supan
Frank Weinkauff

Supporting Performer (\$100+)

Jerome & Catherine Bauman
Dale & Cathy Becker
Sandy Bellatti
Steve & Mary Kay Bochenek
Haley M. Brown
Isabela Burke
Bill & Kim Chestnut
Bernie & Ruth Coleman
Steve & Kathy Cour
Dennis & Patti Daniels
Max & Debbie Dillahunty
John & Paula Dunn
Phyllis N. Eubanks
Dennis & Janie File
Sue Foster
Haag Family
Ken & Fran Hage

Cynthia Higginson
Sarah High
Hank & Linda Keen
Carol & Tom Kerins
The Kerns Family
Frank Lanham
Gail Lehmann
Dick & Linda Livingston
Jim & Sonja McGrath
Lynn & Joe McMenamin
Jack & Diane Miller
Laura Mitkos
Scott & Suzanne Moss
Grace & PJ Nanavati
Pollard Family
Mike & Terry Rogers
Andy & Melissa Roselle

Christopher Schmit
Linda Sczurko
Marguerite Simon
Anna Sohm
Don Stephens
Judy & Ted Sunder
Vicki Thomas
Don & Wanda Tracy
Linda VanAken
Joan Vazzi-Laurie
Sarah & Kim Villanueva
Phil & Pat Wheat
James & Emily Woosley
Terry & Jane Young
In memory of Jim Nelson,
Ron & Karen Wojcicki
Penny Wollan-Kriel

Featured Performer (\$50+)

Jen & Chad Bettis
Melanie & Don Caspary
Annette Edwards
Tsoetsy Harris & Family
Jayme Kirchner

Emalee Knop
Dennis & Marilyn Lawler
Ron & Janet McElroy
Carol & Cressida Stapleton
Donn Stephens

Dr. Larry & Brenda
Stonecipher
Lauren Williams &
Jake Friefeld

In 1998, I witnessed a film which struck me to the core with its music, its story, its acting, and its art. That movie was *The Prince of Egypt* from DreamWorks Animation. Even now, decades later, I can still remember the feeling of hearing those songs for the first time and understanding, even as a child, that art could move people spiritually and emotionally in ways that words alone often cannot. Fast forward to 2020, when *The Prince of Egypt: The Musical* made its debut on the West End. With the legendary Stephen Schwartz returning to shape the musical language of the production, the adaptation managed to retain the emotional soul of the original while expanding its humanity in new and beautiful ways. The score felt both familiar and reborn.

As my directorial debut, I knew I wanted to tell a story that mattered. I wanted to direct something meaningful, something emotionally impactful, something that would challenge an audience not only to watch, but to feel deeply. *The Prince of Egypt: The Musical* was precisely that opportunity. At its core, this story transcends the versions many of us may have learned in churches, temples, synagogues, mosques, or classrooms. Beyond the miracles, beyond the spectacle, beyond the history and theology, this story is about love. It is about love for family, one's people, freedom, faith, for humanity itself. It examines the painful reality that love does not always make our choices easier; often, it makes them far more difficult.

For this production, I wanted that first love—the love between family, and more specifically between brothers—to stand at the forefront of the story. The relationship between Moses and Ramses is not merely political or historical; it is heartbreakingly personal. Before they become opposing leaders, they are brothers who laughed together, grew together, protected one another, and dreamed alongside each other. Their eventual separation is tragic precisely because it is rooted in genuine love. I believe nearly everyone can relate to or empathize with familial struggle. We all have people in our lives whom we have known forever, people connected to us by blood, history, memory, choice, or obligation. Yet through one defining choice, or sometimes through years of smaller choices, we can find ourselves divided from those we once held closest. Sometimes that separation is forced upon us. Sometimes we choose it ourselves because remaining would mean compromising who we are or what we know to be right.

This production confronts those emotions directly. It explores the painful tension between loyalty and conviction, between comfort and justice, between the life we know and the truth we can no longer ignore. Moses and Ramses each stand at the intersection of love and responsibility, and both are asked impossible questions. What do we owe the people we love? What happens when the systems that benefit us are harming others? At what point does silence become complicity? And perhaps most painfully of all: can love survive when truth divides us?

In today's society, we often feel as though we are being pulled apart at the seams by ideology, politics, religion, culture, and identity. Division has become so commonplace that genuine understanding can feel almost impossible. Yet love remains a language every human being is capable of speaking. Compassion, empathy, mercy, sacrifice—these are not bound to any one belief system or philosophy. They are profoundly human traits. However, speaking truth and love to power, to position, or even to someone we deeply care about requires courage. That is when conviction reveals who we truly are. It is easy to love when love costs us nothing. It is far more difficult when love demands sacrifice, accountability, or change.

Conversely, this story also asks another difficult question: when truth can no longer be denied, how will you respond to it? How do we confront the moments when the world we built, inherited, or defended no longer aligns with what is just? Some people harden themselves against those truths. Others allow those truths to transform them. Both responses are present in this story, and both continue to exist within our world today.

More than anything, I hope this production challenges audiences to think differently than they did before. I hope it encourages reflection not only about faith or history, but about humanity itself. Because while this story may originate from sacred texts and ancient traditions, it does not belong exclusively to any one religion or belief system. It belongs to all of us. It is a story about oppression and liberation, about grief and hope, about identity and responsibility, about fear and courage. It is a reflection of what humanity has wrestled with since the beginning of our existence. And ultimately, it is a reminder that even in our most divided moments, there remains something deeply sacred in our ability to choose compassion over cruelty, understanding over hatred, and love over fear.

Wes Bridges, Director

The Prince of Egypt is a sweeping DreamWorks musical based on the celebrated animated film. Set in ancient Egypt, it tells the powerful story of two brothers—Moses, a Hebrew child raised as a prince, and Ramses, the future Pharaoh—whose bond is tested when they discover their true destinies are at odds.

As Moses is called by God to lead his people to freedom, he faces impossible choices between love, loyalty, and faith. The show features a vibrant cast of characters, including the courageous Tziporah, the wise Miriam, and the steadfast Aaron, all brought to life through breathtaking music and dance.

With a soaring score by Stephen Schwartz, including the Academy Award®-winning song “When You Believe,” *The Prince of Egypt* is an epic story of hope, liberation, and the enduring power of faith.



Earn FREE McDonald's
Save Time and Money
Download Today!



We hope you enjoyed the show!
Present this program for a
FREE large soft drink with the
purchase of any large sandwich.



Proudly serving all of Springfield IL along with locations in Chatham,
Jacksonville, Beardstown, Havana, Mt. Sterling

www.capcitymcd.com

Stephen Schwartz (Music & Lyrics) wrote the music and lyrics for WICKED. In addition, Stephen Schwartz's scores for musical theatre include *Godspell*, *Pippin*, *The Baker's Wife*, and *Children of Eden*. For film, he wrote the songs for *The Prince of Egypt* and collaborated with composer Alan Menken on the songs for Disney's *Pocahontas*, *The Hunchback of Notre Dame* and *Enchanted*.

In the classical field, he wrote lyrics in collaboration with Leonard Bernstein for Bernstein's MASS. Awards include three Academy Awards, four Grammy Awards, and the Isabelle Stevenson Tony Award. In the United States, Mr. Schwartz has been inducted into the Theater Hall of Fame and the Songwriters Hall of Fame and has been given a star on the Hollywood Walk of Fame. For further information, he invites interested members of the audience to visit his website at www.stephenschwartz.com

Philip LaZebnik (Book) has written numerous films, TV series and theatrical musicals in Los Angeles and Europe, but he is primarily known for his animated features, including Disney's *Pocahontas* and *Mulan*, and DreamWorks' *Prince of Egypt*, for which he wrote the screenplay and the book for the stage musical. Mr. LaZebnik also wrote the book for the stage musical *Snow White and Me*, which has been produced in Europe and has just recently had a workshop and its English language premiere at the Stephens College Theatre Conservatory in Columbia, Missouri. There is also an animated feature of *Snow White and Me* which is currently being produced.

for Mamma Mia!

- Lauren Bakunas
- Ty Kesselring

for Prince of Egypt

- Goshen Theatre Project
- Hoogland Center for the Arts & Nicole Sivak for last minute rehearsal space
- Valley of Springfield Scottish Rite

- St. Paul's Lodge #500
- Rabbi Rob Thomas
- Tim Sadler
- DJ Shultz & Renown Apparel
- Rachel Bridges
- Dave Barnes
- Mary Young
- Melody Sheehan

**MAKE THE BOLD MOVE
TO A LOCAL
BANK INVESTED
IN OUR COMMUNITY**



BOS
bankwithBOS.com

Member
FDIC



**TROXELL
INSURANCE**

**EVERY GREAT PRODUCTION HAS A
STRONG TEAM BEHIND THE SCENES.**

LET TROXELL ADVOCATE FOR YOU.

PERSONAL | BUSINESS | HEALTH | LIFE | HR SOLUTIONS

217-528-7533
INFO@TROXELLINS.COM
WWW.TROXELLINS.COM



LRS

LEVI, RAY & SHOUP, INC.

Many divisions. One vision.
LRS.com

**THERE'S NO
BETTER FEELING
THAN SECURITY.**



CIS

CENTRAL ILLINOIS SECURITY
A LEVI, RAY & SHOUP, INC. COMPANY

2451 W Monroe Street
Springfield, IL 62704
217.787.4970

CentralllinoisSecurity.com

Director	Wes Bridges
Assistant Director.....	Elijah Sadler
Vocal Director	Donn Stephens
Producer	Michelle Eccles McLaughlin
Orchestra Director.....	Jacob Pahde
Accompanist	Ron Wojcicki
Stage Manager	Adam Reisch
Assistant Stage Manager.....	Jeremy Tackett
Set Crew.....	Caleb Grover, Jennifer Kissner, Kurt Yenerall, Steven Zoelzar, Theresa Zoelzar
Costume Designer.....	Lisa Coakley
Costume Crew.....	Larisa Durbin, Ann Holtrop, Janet Gaffney, Colleen Pittman
Set Designer	Wes Bridges
Make-up & Hair Designer	Jacqueline Keysear
Prop Designer.....	Cate Miller
Builders.....	Muni Set Committee
Lighting Designer Operator	Kevin Cline
Sound Operator	Jeremy Goeckner
Production Coordinator.....	Deanna Sullivan

Yocheved.....	Chrissy Mauck
Young Miriam	Corinne Dunkirk
Young Aaron	Jackson Kissner
Queen Tuya	Ashley Cantrall
Moses	Antonio Muñoz
Ramses	Robert Napier
Hotep.....	Blake Buckles
Pharaoh Seti	Jacob House
Nefertari	Timeka Malone
Tzipporah	Liyah Orielle
Miriam.....	Isabella Muñoz
Aaron.....	Ryan Cour
Leah.....	Magdalena Osterhuber
Keturah.....	Kaiyah Bubniak
Jethro.....	Justin Johnson
Ensemble.....	Emma Buckles, Justin Coy, Kaitlyn Darnell, Gwen Foster, Zakiya Hill, Grace Ingersoll, Elizabeth Klauzer, Madison Mings, Peyton Myers, Isabella Oliver, Vincent Powell, Julia Rolens, Alexandra Rollins
Kids Ensemble	Peyton Jean Coakley, Grayson Eisele, Kadence Haynes, Lydia Klauzer, Bernadette “Bee” Otwell, Addison Tomaw, Zach Walter
Pit Chorus.....	Wrik Chatterjee, Rebecca Coakley, Tomison Fijabi, Thomas George, Megan Maletich, Violet Perkins, Rebecca Strauss, Kimberly Tomaw

AMBASSADOR™ WRN WEATHER-READY NATION

The Muni takes the safety of our patrons, cast, and crew very seriously. When severe weather threatens, we maintain contact with the National Weather Service as members of their Weather-Ready Ambassador program. If inclement weather forces an interruption in tonight's show, please listen to the announcement via our public address system, ushers and staff for further instruction.

a creative space for artists of all ages located in the heart of charming petersburg, illinois



voice lessons
instrumental lessons
pop tots!
yoga
dance
photography studio
audition workshops
musical theatre
fitness
private parties and events
...and more!



follow us on social media
@thestudioonthesquare



or email for info:
thestudioonthesquareinc@gmail.com



“Break a Leg!”
(Then come see us.)



ORTHOPEDIC CENTER WALK-IN CLINIC

1301 S. Koke Mill Road, Springfield
Monday - Friday 7:30am to 5pm
Saturday 8am to Noon

(217) 547-9100
OrthoCenterIllinois.com

ACT ONE

<i>Deliver Us</i>	Hebrews, Egyptian Overseers, Yocheved, Tuya, Young Miriam
<i>Faster</i>	Moses, Ramses, Hotep, Priests
<i>One Weak Link</i>	Seti
<i>One Weak Link (Reprise)</i>	Ramses
<i>His Son and Heir</i>	Moses, Ramses, Ensemble
<i>Footprints on the Sand</i>	Moses
<i>Transition to Barge</i>	Ensemble
<i>Seti's Return</i>	Egyptians
<i>Dance to the Day</i>	Tzipporah
<i>Tzipporah Escapes</i>	Egyptians
<i>Dance to the Day (Reprise)</i>	Tzipporah, Moses
<i>All I Ever Wanted</i>	Miriam, Moses, Yocheved, Seti, Tuya
<i>The Laws of the Gods</i>	Hotep, Ensemble
<i>Make It Right</i>	Ramses, Moses
<i>Moses in the Desert</i>	Ensemble, Moses
<i>The Well</i>	Leah, Keturah
<i>Through Heaven's Eyes</i>	Jethro, Midianites
<i>Faster (Reprise)</i>	Ramses, Moses
<i>Never in a Million Years</i>	Tzipporah, Moses
<i>Act 1 Finale</i>	Company

ACT TWO

<i>Through Heaven's Eyes (Reprise)</i>	Tzipporah
<i>The Naming Ceremony</i>	Hotep, Priests, Ensemble
<i>Always on Your Side</i>	Ramses, Moses
<i>Simcha!</i>	Moses, Miriam, Tzipporah, Hebrews
<i>Simcha! (Playoff)</i>	Moses, Hebrews, Hotep
<i>Deliver Us (Reprise)</i>	Aaron, Hebrews
<i>The Plagues</i>	Ramses, Hotep, Priests, Miriam, Aaron, Moses, Tuya, Ensemble
<i>They Will Be Free</i>	Ensemble
<i>For the Rest of My Life</i>	Moses
<i>Heartless</i>	Nefertari
<i>When You Believe</i>	Miriam, Tzipporah, Young Girl, Moses, Ensemble
<i>Act II Finale (Part 1)</i>	Moses, Tzipporah
<i>Act II Finale (Part 2)</i>	Miriam, Moses, Yocheved, Company
<i>Act II Finale (Part 3)</i>	Company

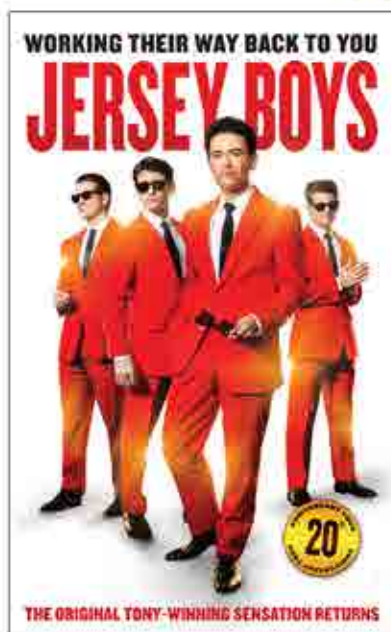


University of Illinois Springfield
**PERFORMING
 ARTS CENTER**

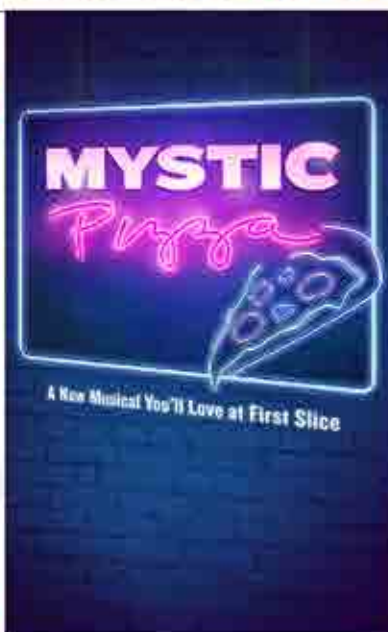
University of Illinois S

2026-2027 Br

BROADWAY RETURNS IN A BIG WAY
One Fan Favorite & An Add-On



October 2, 2026



January 26, 2027



March

THE BEST SEATS. THE BEST VALUE.

Ticket prices as LOW as \$39 for subscribers! Ticketing fees are waived.

FIVE SPECTACULAR SHOWS AWAIT! SECURE YOUR SUBSCRIPTION TODAY!

An Amazing Combination! Experience the

FRIENDS members can have access to:

- Exclusive backstage opportunities.
- Reserved VIP parking.
- Concierge ticketing service.
- Private Members Lounge for
- Advance ticket purchases.
- Recognition in event guides

Conductor.....	Jacob Pahde
Keyboard 1	Ron Wojcicki
Keyboard 2	Amanda Neubauer
Reed 1 (clarinet/flute)	Reese Oller
Reed 2 (flute/recorder)	Kittie Elshoff
Horn 1	Angi Chase
Horn 2	Bethany Spear
Trumpet	Braden Lueking
Violin 1	Sally Fritz/Madelyn Beck
Violin 2	Mary Lueking/Abigail Lueking/Emsley Robinson
Viola	Rachel Helton
Cello	Leia Philbrick
Bass	Maxwell Beckman/Henry Miller
Guitar	Christian Wilkey
Drums	Kevin Hart
Percussion	Julian Castillo

Keyboard programming created by Evan Barrett, Music by Evan, Columbiana, OH

Brent Bordenkircher, AAMS®
 Partner | Wealth Manager
 BBordenkircher@kingsview.com
 o: 217-814-9777





Proud supporter of local theater, and #1 Brockstar fan

Investment advisory services are offered through Kingsview Wealth Management, LLC ("KWM"), an SEC Registered Investment Adviser. Insurance products and services are offered and sold through Kingsview Insurance Services, LLC ("KIS"), by individually licensed and appointed insurance agents. KWM and KIS are subsidiaries of Kingsview Partners.

Supporting the Arts in Our Community Since 1973!









Photos by Emily Noel, Leon Linder, and Nathan Davis.



The Leader of Community Banking



Confidently Navigate Dementia with World-Class Support

When navigating the aging journey of a loved one, **EverTrue Concordia Village** is your partner for ensuring world-class, compassionate and personalized care.

- Individualized 24/7 care
- Art programs, music therapy and social connection
- Innovative technology like the Tovertafel “Magic Table”

SCHEDULE A PRIVATE TOUR TODAY

EverTrueConcordiaVillage.org
217.912.5244

4101 West Iles Ave.
Springfield, IL 62711



EVERTRUE™

Concordia Village

EverTrue Concordia Village is a nonprofit, faith-based Life Plan Community serving older adults.
Independent Living | Assisted Living | Memory Support | Long-Term Care | Short-Stay Rehab

 **THE HOOGLAND** 
CENTER FOR THE ARTS

Tim Crawford's

OUTRAGED

Terror in Springfield 1908

August 14-16



TICKETS NOW AVAILABLE!

(217) 523-2787 OR **HCFTA.ORG**
420 S. 6TH STREET IN SPRINGFIELD



Where the Arts Come Alive!

* indicates first Muni appearance

Kaiyah Bubniak (Keturah) is going to be a junior at PPHS, where she participates in POMS and madrigals. She also enjoys dancing at PPA. Kaiyah is thrilled to return to The Muni stage this summer and would like to thank her family, (and her theater family!), for their support.

Blake Buckles (Hotep) is a rising senior at Illinois College where he studies Agri-Business Management and is a member of the football team. He is extremely excited to be back on The Muni stage again this summer for his 4th show. A special thank you goes out to his family as well as everyone who has made this show possible.

Emma Buckles (Ensemble) is an incoming sophomore at Mizzou where she studies Speech-Language Pathology. She has been in many shows through Muni, STC, Hoogland, and Rochester. Most notably, Paulette in *RHS' Legally Blonde* last year. She is so grateful to have spent the past four summers at Muni doing what she loves!

***Ashley Cantrall** (Queen Tuya) believes music and storytelling bring people together. She serves in worship ministry at Athens Christian Church and enjoys sharing music in her community, building projects from businesses to bathrooms and loving on her kids. Immeasurable thanks to Michael, family, voice coach MK, and her ACC church family.

***Wrik Chatterjee** (Pit Chorus) is excited to make his Muni debut. He has enjoyed being in a production for the first time since high school. Outside of theater, he enjoys fossil hunting and learning languages. He wishes to thank his voice teacher, Manny, and all of his friends for encouraging him to audition.

***Peyton Jean Coakley** (Kids Ensemble) is very excited to be making her Muni debut. She's especially excited to be sharing this experience with her Mommy, Tutu, aunties, and cousin! She would like to thank her Mommy for giving her life and supporting her performance dreams.

Rebecca Coakley (Pit Chorus) is excited to share this experience with so many of her family members! She is especially thankful to have the opportunity to share the magic of a Muni musical production with her best little friend, her mini me, and the best daughter ever-Peyton Jean!

***Ryan Cour** (Aaron) is very excited to be performing on The Muni stage for the first time. He previously was Peter in STC's *Jesus Christ Superstar* and ensemble in the Legacy's production of *Grease*. Ryan would like to thank his friends and family for all of their support.

Justin Coy (Ensemble) is thrilled to be sharing The Muni stage with such talented performers in this show based on one of their favorite childhood movies! Justin was seen most recently in *Jesus Christ Superstar* at STC, as Kyle in *Legally Blonde* at DUT, and as a Bard Boy in *Something Rotten* at Muni.

***Kaitlyn Darnell** (Ensemble) is honored to make her Muni debut in this powerful production. Her favorite role has been Alice in *Six Impossible Things Before Breakfast* at Blackburn College. She thanks Jesus, her husband Brandon, and her family and friends for their love and support.

***Corinne Dunkirk** (Young Miriam) is thrilled for her first Muni performance. She's done three Hoogland Education shows, most recently Aphra in *Children Of Eden*, yet she is most excited for this show! She thanks her family and friends for their nonstop support. She hopes she can do the role of Young Miriam justice! Enjoy the show!

Grayson Eisele (Kids Ensemble) will be a 7th grader at Glenwood Middle School. He has performed at: Muni, HCFTA, STC, Hoogland Ed, and TIP. He thanks his parents for letting him do this. Also, he would like to thank his friends for their support.

Tomison Fijabi (Pit Chorus) says 'Hello Muni!' Up in the Chicagoland area, Tomisin was recently a reporter in musical *Anastasia* and eccentric cast member Emerson in play-within-a-play and Three Musketeers adaptation *The Inseparables*. Tomisin hit the ground running with her introduction to Springfield theatre, and she is thankful to feel welcomed with open arms. Enjoy!

Gwen Foster (Ensemble) is a sophomore at Southeast Missouri State University. She is ecstatic to be back on The Muni stage for the third year. She has previously been in *Newsies* (2022) and *Cinderella* (2024). She would like to thank her amazing family for always coming out to support her on The Muni stage.

Thomas George (Pit Chorus) is excited to return for his second-ever Muni show after appearing in the ensemble of *All Shook Up* last month. He's enjoyed getting back into theater after a post-high school hiatus and meeting so many talented people. He thanks his friends and family for their support.

Kadence Haynes (Kids Ensemble) is 10 years old, and this is her 2nd summer participating in The Muni. She is thankful to her friends and family for encouraging her and pushing her to do her best. Kadence loves God and is grateful for the opportunity to help tell this story.

***Zakiya Hill** (Ensemble) is thrilled to make her Muni debut in *The Prince of Egypt!* A passionate performer and educator, she loves using music, dance, and storytelling to inspire. Previous credits include *Dreamgirls* and *For Colored Girls*. She thanks her family, friends, and students for supporting her journey back to the stage.

Jacob House (Pharaoh Seti) is thrilled to be back this year. His recent roles include an Apostle in *Jesus Christ Superstar* (STC) and Fred in *Oklahoma!* (Muni). Jacob would like to thank his family and friends for allowing him to spend another summer with the heat and bugs at The Muni.

Grace Ingersoll (Ensemble) is going to be a senior at Williamsville High School this coming school year. She is involved in many extracurriculars at her school including Madrigals, Vocal Jazz, musicals, and the Dance Team! She has been involved in many shows with STC, Hoogland, ACTT, and Muni. She has most recently been seen in *Mamma Mia*, *Mean Girls*, and *Beetlejuice!* She would like to thank all the staff for their hard work put into this show. She would also like to thank her family and friends for their support.

Justin Johnson (Jethro) is excited and grateful to be back on The Muni stage. He has been seen in The Muni's productions of *Cinderella* (Sebastian), *Hunchback of Notre Dame* (Father Dupin), and *Jersey Boys* (Hal Miller). Shout out to his mother, Dr. Lesa Johnson of UIS, for always being an inspiration and his partner, Kinsey, for all her support. Thanks for supporting the arts!

Jackson Kissner (Young Aaron) is a 7th grader at Little Flower School. He has been in shows at Muni, Hoogland, STC and LFS. Jackson would like to thank his Mom, Dad, Grandma and brother for their support. Also, he would like to thank Wes and Elijah for giving him this opportunity.

Elizabeth Klauzer (Ensemble) is a music educator in central Illinois. She is excited for another Muni show with her daughter, Lydia. Her last role at The Muni was Fruma Sarah in *The Fiddler on the Roof*. Lots of love to Caleb, Joseph, family, and friends in the audience.

Lydia Klauzer (Kids Ensemble) is a book worm and gamer girl. This is her second Muni show. Her first show was *Fiddler on the Roof*. She was also in *Tucker Everlasting* at STC as Nana. Lydia likes to sing and play piano. She says “Hi” to her family.

Megan Maletich (Pit Chorus) is grateful to share this experience with two of her sisters, two of her nieces, and her Mom! In her free time, Megan enjoys running and crafting. She sends her love and thanks to Adam, Cecilia, Poe, Belle, and the rest of her family for all their support!

***Timeka Malone** (Nefertari) is so excited to be a part of *The Prince Of Egypt* in her first Muni show. Tamika is a local hairstylist in Springfield, IL, and she loves all things art, beauty, and fashion!

Chrissy Mauck (Yocheved) is an active performing arts educator, performer, and musician with over 20 years of experience, both on and offstage. Favorite Muni credits include Belle (2023), Sandy Cheeks (2022), and Gabrielle (2024). Chrissy thanks her daughter Serena for lovingly supporting her theater pursuits!

***Madison Mings** (Ensemble) says *The Prince Of Egypt* is her VERY first musical ever and first time performing with The Muni! She is so excited! She was on the dance team in high school and college! She loves musicals, singing and dancing! Huge shoutout to Angelica for getting me to audition!

Antonio Muñoz (Moses) serves as the youth pastor at New Hope Church in Shelbyville, IL. He would like to thank his family for always supporting him, and most importantly Jesus for loving him unconditionally and giving him the opportunity to be a light for Him wherever he goes! Ephesians 2:1-10

***Isabella Muñoz** (Miriam) is thrilled to be back on the theatre stage in this Muni debut! With a BA in Theatre Performance and many blessed years leading worship, she seeks to point others to the God of miracles through her art. Hope is real, He has a name, & His name is Jesus.

Peyton Myers (Ensemble) hails from Raymond, IL, has been performing since 6th grade and has gone on to perform in many shows over the years. He enjoys playing video games, watching fun movies, and hopes to get into voice acting.

Robert Napier (Ramses) is excited to be part of *The Prince of Egypt* cast. Previous credits include *Shrek the Musical* (Donkey), *Jesus Christ Superstar* (Simon Zealotes), *Beautiful: The Carole King Musical* (Drifter), *The Little Mermaid* (Sebastian), *RENT* (Benny), *Disaster!* (Ensemble), and vocalist in the *Billy Joel Songbook*. Robert is grateful for the support of his friends and family

***Isabella Oliver** (Featured Dancer/ Ensemble) is excited to make her debut for The Muni this summer! Isabella has been a competitive dancer for over 10 years, involved in Show Choir, as well as having received multiple vocal awards throughout the years. Isabella wants to thank her family, friends, and everyone coming out tonight for supporting her!

Liyah Orielle (Tzipporah) is a performing artist creating a life she once only imagined building. Since her Springfield Debut as Mimi in STC's *RENT*, she has portrayed Esmeralda (*Hunchback*), and Deena (*Dreamgirls*). To her, creativity is survival, and the Arts remain both refuge and rebellion. P.O.E.T.Y.S.M!!

Magdalena Osterhuber (Leah) is so excited to be in *Prince of Egypt*. This is her 5th Muni show. Her most recent role was Jovie in *Elf Jr.* at Rochester Junior High. She is in choir, band, and the ISYO. She would like to thank her family, friends, teachers, and her dog, Jackie, for supporting her.

Bernadette "Bee" Otwell (Kids Ensemble) will be a 7th grader at Franklin Middle School. This is her second summer at Muni, and she's also been in three Hoogland Ed productions. She loves soccer, clarinet, and art. She'd like to thank everyone who made this inspiring show happen and her family for their support.

***Violet Perkins** (Pit Chorus) is very excited to be in her first Muni show with the amazing cast and crew in *The Prince of Egypt*. Violet has been doing theater since she was 5 and can't wait for future Muni shows! She thanks her family for convincing her to audition!

Vincent Powell (Featured Singer/ Ensemble) is so excited to be a part of this amazing cast. He is currently a junior at Rochester High School and is involved in their Madrigals, Vocal Jazz, and Theater program. His most recent productions include *Newsies* (RHS; Race), *The Phantom of the Opera* (Hoogland Education; Raoul), and *Oklahoma* (Muni; Cowboy). He would like to thank his family and friends for their support!

***Julia Rolens** (Ensemble) is so excited for her first Muni show! You may have seen her recently as Logainne in STC's *The 25th*

Annual Putnam County Spelling Bee. She'd like to thank her family, but most of all her dad and her sister Brigitte for pushing her to follow her dreams.

Alexandra Rollins (Ensemble) is pursuing a BA in Music at Taylor University and is thrilled to return to The Muni this summer. Recent credits include *The Hunchback of Notre Dame*, *The Little Mermaid*, and *The Boys from Syracuse*. She would like to thank her family and friends at TU for their constant support.

***Rebecca Strauss** (Pit Chorus) is thrilled to be making her Muni debut! She is an environmental lawyer and can also be found singing soprano with the Springfield Choral Society. She thanks her family for their incredible support and her fiancé, Samantha, for encouraging her to put herself out there and try new things!

Addison Tomaw (Kids Ensemble) is excited to be a part of The Muni after spending years watching the shows. She is excited to be sharing the stage with her Mama and other family members. Addison has previously been in shows through Hoogland Ed. She would like to thank the staff for this opportunity.

Kimberly Tomaw (Pit Chorus) is excited to be back on The Muni stage this summer. Kimberly is thrilled to share the stage with two of her sisters and her daughter, Addison. She gives thanks to the production staff for this opportunity and her family for their support.

***Zach Walter** (Kids Ensemble) is thrilled to make his Muni debut! A 6th grader at Rochester Intermediate, his favorite credits include Anchor (*Finding Nemo Jr.*), Count Leopold (*Anastasia: Youth Edition*), and Noah (*Children of Eden Jr.*) at the Hoogland. Zach sends love and thanks to family, friends, and Mr. McCafferty for their support!



Springfield Theatre Centre

Our 79th Season!



October 2-4, 9-11, 2026

Directed by: Reggie Guyton
and Jasmine French



November 13-15,
20-22, 2026

Directed by: Kim Shafer



December 4-6, 11-13, 2026

Directed by: Emily Noel
and Megan Hickman



January 15-17,
22-24, 2027

Directed by: Jacob Pahde



February 5-7,
12-14, 2027

Directed by: Shelby Bayless



March 12-14,
19-21, 2027

Directed by: Adam Reisch



April 9-11, 16-18, 2027

Directed by: Wes Bridges and
Elijah Sadler



May 7-9, 14-16, 2027

Directed by:
Sean Robb

Wes Bridges (Director/Set Designer) is a Program Director at SIU School of Medicine. He has performed as Shrek (Muni 2025) and Quasimodo (STC 2019) as well as many other notable roles. Wes directs, vocal directs, and serves on The Muni board. He sends love to his family who continually supports him.

Elijah Sadler (Assistant Director) is incredibly honored to help bring *Prince of Egypt* to The Muni stage as the assistant director. Elijah spends much of his time onstage where you may have seen him recently in STC's *Bye Bye Birdie* as Albert Peterson or recent area productions of *Guys and Dolls* as Nicely-Nicely Johnson. He would like to thank his family, his friends, and Joe Burrow.

Donn Stephens (Vocal Director) has been involved in theatre as an actor, vocal/music director, and composer/arranger throughout central Illinois. Donn is a retired music educator, presents music programs, is an adjudicator at music contests, is the pastor of Jerome United Methodist Church, and enjoys pie, traveling, and mountain hiking.

Michelle Eccles McLaughlin (Producer) is producing her fourth Muni show. By day, she's the local morning host for NPR Illinois and Community Relations and Giving Consultant for Horace Mann. She thanks her children and husband, Joey, for their support and looks forward to seeing the audience react to the work of this cast and staff.

Jacob Pahde (Orchestra Director) was the assistant director and orchestra conductor for last summer's *Oklahoma!* and served as assistant director for *Disney's The Little Mermaid*. He also played Mr. Bundles in our 2018 production of *Annie*. He will direct *Frost/Nixon* for STC this coming January. He would like to thank his parents, his brother, and Doug Hahn for

their support. Special thanks to Stephen Schwartz for writing this beautiful score. Exodus 23:9.

Ron Wojcicki (Rehearsal accompanist/Keyboard 1) began his professional career as a band director at New Berlin HS and Sacred Heart-Griffin HS. He also coached baseball at SHG and UIS. Since retiring from UIS, he has enjoyed playing keyboard in the local musical theater the past few years.

Adam Reisch (Stage Manager) is stoked to be on staff for this powerful show! He has stage managed numerous productions in the Springfield area! Including most recently: *25th Annual Putnam County Spelling Bee* (STC), *Little Shop of Horrors* (HCFTA), *Sweeney Todd* (HCFTA), *Something Rotten* (HCFTA), and *Beauty and the Beast* (Muni). Adam would like to thank Wes for this opportunity and his wife, Sarah, for her continued love and support!

Jeremy Tackett (Assistant Stage Manager) has worked backstage at 35 including 10 at Muni, most recently *Beauty and the Beast*, *Music Man*, and *Oklahoma*. He enjoys the process/unique tasks required to bring a show to life (some more mind boggling than others)! Thank You to the hardworking crew!

Lisa Coakley (Costume Designer) is happy to be sharing this show with her daughters and granddaughters. She thanks Wes for making this happen. Lisa also thanks her husband, Kevin, for his patience and support, "You are the best!"

Jacqueline Keysear (Make-up & Hair Designer), Although usually onstage, Jacqueline also enjoys planning hair and make-up. You may have seen her recently in STC's *Something's Afoot*, as Hope Langdon. It has been a fun challenge changing make-up quickly and in the middle of the show (Thanks for that) and thanks to Zoe, Meghan, Wren, and Bernie.



Enjoy the show!

BANK LOCAL under the stars!
ROOTED IN COMMUNITY. DRIVEN BY PURPOSE.

SECURITYBK.COM | 217-789-3500 | MEMBER FDIC | EQUAL HOUSING LENDER   




Buy • Sell • Trade
Sports Cards & Pokemon

217 N. Main St.
Chatham, IL
217-697-5052
Wed 11-5 • Thu 11-9
Sat 11-4

Solution
PRINTING

**LET US PUT YOUR
PRINTING IN
THE SPOTLIGHT!**

217.529.9700 • SolutionPrint.com • 3135 South 14th St. • Springfield, IL 

Cate Miller (Prop Designer) is excited to be backstage for *Prince of Egypt*. The first show she propped for The Muni was *South Pacific* in 2002. She was last on stage in *Fiddler on the Roof* in 2023. She has worked on shows for STC, The Muni, Hoogland, and Hoogland Education. Cate wants to thank Andy for keeping Bullet company at home while she is away.

Kevin “Hootey” Cline (Lighting Designer/Operator) is the Founder and Lead Gunsmith at Blue Coat Arms Company. Hootey has been involved on and off stage in the Springfield area for 14+ years and has contributed at The Muni for 2019 *Wizard of Oz*, 2025 *Something Rotten*, and 2026 *All Shook Up*. Much love and thanks to his wife Lydia and kids.

Jeremy Goeckner (Sound Operator) is a regular of the Springfield theatre scene, most recently appearing as Robert Kincaid in STC's *Bridges of Madison County*. He is honored to help bring this amazing story to life. He sends all of his love to his wife Sara and sons Gibson and Camden.

Deanna Sullivan (Production Coordinator) thoroughly enjoys The Muni Experience! She's thankful that Wes asked her to join the *Prince of Egypt* family. She also thanks her family who encourage her Muni endeavors. She is especially blessed to share the backstage with this cast and crew!



The Muni takes the safety of our patrons, cast, and crew very seriously. When severe weather threatens, we maintain contact with the National Weather Service as members of their Weather-Ready Ambassador program. If inclement weather forces an interruption in tonight's show, please listen to the announcement via our public address system, ushers and staff for further instruction.

Come grow with us.
100 Years of Service & Still Going Strong



Financial Partners
CREDIT UNION

Your Trusted Financial Partner

940 N MacArthur Blvd, Springfield, IL 62702 ~ 217-744-1456



Innovation • Value • Selection

Walk-Thru Over 3 Acres of Design Ideas

We Deliver For You!

GRAVEL • MULCH • PAVERS

G ★★★★★ f **STONE • LIFESTYLE**



Materials & Supplies for Your:
Home • Outdoor Living • Stone Masonry • Landscaping • Lifestyle

ARTISANSTONEPRODUCTS.NET
217.697.8433

Hours Monday - Friday 7:00 - 5:00 • Saturday 8:00-2:00
2475 Peerless Mine Rd. • Springfield

Present Coupon For

UP TO
10% OFF

Exp. 8/31/2026



CONCESSIONS MENU



The Original Muni Dog

Pulled Pork Sandwich



Soft Pretzel w/ Salt & Cheese Sauce

Nacho Chips & Cheese Sauce

Popcorn



Assorted Candy



Assorted Chips

Variety of Ice Cream Treats (in the freezer-self serve)

Fountain Soda & Bottled Soda (Pepsi Products)

Siberian Chill Frozen Drinks

Sweet & Unsweet Iced Tea



Assorted Gatorade

Bottled Water



NOW OFFERING: Muni Merch! T-Shirts, Hoodies & MORE!

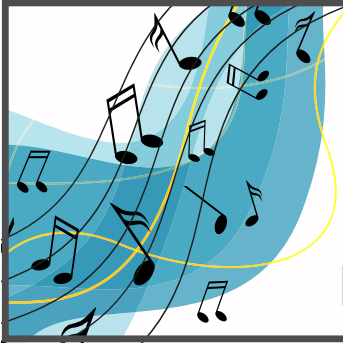
The Concession Stand operates from 7 pm to 8:30 pm, coinciding with the commencement of the show, and reopens during intermission. It ceases operations for the evening upon the start of Act II. Hence, it is advisable to acquire snacks and merchandise before Act II commences. ~Thank you!!



- Backyard Bird Feeding Supplies
- Gifts and Garden Decor
- Premium Dog and Cat Foods

217-789-6468
wbu.com/springfieldil
Find us on Facebook!

1930 S. MacArthur Blvd. Springfield



Proud to support the
Springfield Muni Opera!

CEFCU Not a bank. Better. ®



cefcu.com



COPPER COIN
BALLET COMPANY

ROCKBALLET



LIVE AT THE MUNI with DOWNSTATE
SEPTEMBER 12



I'm finding

MORE

Success



Lincoln Land
Community College

www.llcc.edu/explore

- 1965** The Music Man; South Pacific
- 1966** My Fair Lady; Pajama Game
- 1967** Brigadoon; Guys and Dolls; Camelot
- 1968** The Unsinkable Molly Brown; Oliver!;
Kiss Me, Kate
- 1969** Bells Are Ringing; Gypsy; Annie Get Your Gun
- 1970** Li'l Abner; A Funny Thing Happened on the Way to
the Forum; Man of LaMancha
- 1971** Funny Girl; The King and I; Fiddler on the Roof
- 1972** You're a Good Man, Charlie Brown; 1776; Most Happy
Fella; The Sound of Music
- 1973** Once Upon a Mattress; Carnival; Promises, Promises;
Oklahoma!
- 1974** On a Clear Day You Can See Forever; Hello, Dolly!;
Applause; The Music Man
- 1975** Guys and Dolls; How To Succeed in Business Without
Really Trying; Fiddler on the Roof; Mame
- 1976** 1776; Irene; Bye, Bye, Birdie!; Calamity Jane
- 1977** Cinderella; The Desert Song; West Side Story; My Fair
Lady
- 1978** Sweet Charity; Brigadoon; Paint Your Wagon;
I Do! I Do!
- 1979** Shenandoah; No, No, Nanette; Pajama Game;
Carousel
- 1980** South Pacific; Good News; Gypsy; Show Boat
- 1981** Camelot; Grease; Oklahoma!; A Little Night Music
- 1982** Kismet; George M!; Oliver!; Follies
- 1983** The King and I; Joseph and the Amazing Technicolor
Dreamcoat; The Student Prince; Hello, Dolly!
- 1984** Peter Pan; Funny Girl; Two Gentlemen of Verona; The
Music Man
- 1985** Annie; Damn Yankees; You're a Good Man, Charlie
Brown; Evita
- 1986** The Sound of Music; Jesus Christ Superstar; Cabaret;
Seven Brides for Seven Brothers
- 1987** Annie Get Your Gun; The Wiz; Promises, Promises;
Gigi
- 1988** Peter Pan; South Pacific; 42nd Street; Mame
- 1989** Joseph and the Amazing Technicolor Dreamcoat;
Fiddler on the Roof; Singing in the Rain; My Fair Lady
- 1990** Oklahoma!; Teddy & Alice; Anything Goes; Camelot
- 1991** Oliver!; My One and Only; Into the Woods; Show Boat
- 1992** Man of LaMancha; Dreamgirls; Me and My Girl; The
Unsinkable Molly Brown
- 1993** Hans Christian Andersen; Sugar; Pirates of Penzance;
Brigadoon
- 1994** Peter Pan; Hello, Dolly!; Big River; Carousel
- 1995** The King and I; Meet Me in St. Louis; City of Angels;
Gypsy
- 1996** Phantom; The Will Rogers Follies; Little Me; The
Wizard of Oz
- 1997** Guys and Dolls; Crazy for You; The Secret Garden; Kiss
Me, Kate
- 1998** Fiddler on the Roof; Bye, Bye, Birdie!; Godspell; Annie
- 1999** State Fair; 42nd Street; The Goodbye Girl; The Sound
of Music
- 2000** Cinderella; Grease; Children of Eden; The Music Man
- 2001** How To Succeed in Business Without Really Trying; A
Little Night Music; West Side Story; Peter Pan
- 2002** Joseph and the Amazing Technicolor Dreamcoat;
Anything Goes; Mame; South Pacific
- 2003** Titanic; Big; My Fair Lady; The Wizard of Oz
- 2004** Honk!; Seven Brides for Seven Brothers; A Chorus
Line; Big River
- 2005** The Sound of Music; Ragtime; Annie Get Your Gun;
Disney's Beauty And The Beast
- 2006** Annie Warbucks; Chicago; Elton John & Tim Rice's
Aida; The King and I
- 2007** Miss Saigon; Peter Pan; Grease; Oklahoma!
- 2008** Hello, Dolly!; All Shook Up; The Secret Garden; The
Music Man
- 2009** Oliver!; The Producers; Fiddler on the Roof; Disney
High School Musical
- 2010** Seussical; Into The Woods; Jesus Christ Superstar;
Annie
- 2011** Big River; Guys and Dolls; Hairspray; The Wizard of Oz
- 2012** Joseph and the Amazing Technicolor Dreamcoat;
Crazy for You; Once On This Island; Disney's Beauty
and the Beast
- 2013** Les Misérables; Dreamgirls; Peter Pan; RENT
- 2014** The Sound of Music; All Shook Up; Shrek the Musical;
Jekyll & Hyde
- 2015** Spamalot; Seussical; West Side Story; Cabaret
- 2016** South Pacific; Sweeney Todd; Nice Work If You Can
Get It; Disney's The Little Mermaid
- 2017** Roald Dahl's Willy Wonka; Disney's Mary Poppins;
White Christmas; Grease
- 2018** Little Shop of Horrors; Sister Act; Legally Blonde;
Annie
- 2019** Peter Pan; Evita; Thoroughly Modern Millie; The
Wizard of Oz
- 2022** The Spongebob Musical; Ragtime; Newsies; Matilda
- 2023** Fiddler on the Roof; Rock of Ages; Beauty and the
Beast; School of Rock
- 2024** Jersey Boys; The Music Man; Cinderella; Disney's The
Little Mermaid
- 2025** Something Rotten; Hunchback of Notre Dame;
Oklahoma; Shrek

**NO OTHER PLACE
HAS IT ALL
LIKE YOUR LOCAL**



**2804 N. DIRKSEN PKWY
OR
3030 WABASH AVE**

FarmandHomeSupply.com



**King's Daughters
ORGANIZATION**
SERVING SENIORS SINCE 1893

**Proud supporter of the
Muni Senior Bus again in 2026.
Celebrating over 125 years of service
to seniors
in Sangamon County.**

INVESTING IN YOU

Helping you achieve financial success with an all-in-one approach that puts you first.



- ✓ Financial & Retirement Planning
- ✓ Fee-based Portfolio Management

Robert Gordon & Associates
a Berger Financial Group Company

1201 South Veterans Parkway
Springfield, IL 62704

📞 (217) 698-4844

✉️ rga@bergerfinancialgroup.com

🌐 bergerfinancialgroup.com



Berger Financial Group

Advisory services offered through Berger Financial Group Inc., a Registered Investment Advisor.



Congrats MTC Students & Team!!

We are **so proud** of all of our team members & students taking part in this summer's Muni shows! We know how hard you have all worked to get here!

Way to go & break a leg!

Join the fun!



**MUSIC THERAPY
connections** CENTRAL ILLINOIS

1124 Centerville Drive | Springfield, IL | (217) 433-3434 | www.musictherapyconnections.org

Cindy Candioto

The Muni family lost a dear friend whose presence, support, and advocacy for the last 25 plus years will leave a true void for years to come. Cindy, the mark, and legacy of a true generous spirit you leave behind are profound...ones we can only hope to honor and strive to carry forward. We will miss you dearly.

Steve Williams

Steve was a larger-than-life presence and a true Muni star, delivering many memorable lead performances on our stage. He also directed, painted, built sets, and contributed in numerous backstage roles. When asked what he enjoyed most, he said, "Well, duh, acting, it gets more applause!" As both a middle school theater teacher and a veteran performer, he mentored many who later starred on The Muni stage. Steve's talents, friendship, and leadership will be greatly missed.

Judy Carlisle

Judy will long be missed as the one of the first smiling faces greeting all those attending a performance at the Springfield Muni Opera. Judy volunteered in the box office for more than 20 years. She is without a doubt one of the best examples of being a true fan and supporter of all that the Muni strives to be. We will miss you Judy, your smiling face, and all the fun and laughter you brought to any room you entered for many years to come.

Malcolm McKean

Malcolm was introduced to Muni in the 1950's when he accompanied his grandfather, who played in Muni orchestras, to rehearsals and performances. In the 1990's, Malcolm reconnected with Muni where he has volunteered annually since. Malcolm helped to build sets, was on set crews, and assisted with whatever was needed to be accomplished backstage. He later transitioned to Concessions, where he was a regular in the rotation of cashiers for each production. His steadfast dedication to Muni will be sorely missed.

Enjoy Your Evening Under the Stars



VISUAL COMMUNICATIONS SINCE 1940

www.acesignco.com

Our paints bring Muni's imagination to life.
Imagine what we can do for you.



1627 SOUTH MACARTHUR • 787-5474



Plan Today For a More
Harmonious
Financial Life Tomorrow

Thank You For Supporting Local Theater!

Anna Sohm, MBA
Financial Advisor
217-416-ANNA

Securities offered through Keira Investment Services, LLC (Keira IS), member FINRA/SIPC.
Investment advisory services offered through Keira Advisory Services, LLC (Keira AS), an affiliate of Keira IS. Coonrod Financial Group is not affiliated
with Keira IS or Keira AS. Keira IS and Keira AS do not provide tax or legal advice and are not Certified Public Accountants (CPAs) firms. Investor
Disclosures: www.keirafinancial.com/disclosures



**SPRINGFIELD PEPSI-COLA
BOTTLING CO.**

www.themuni.org

The individuals and businesses appearing on this page and elsewhere in this program help to make "Broadway Under The Stars" possible. We thank them and encourage you to let them know you appreciate their support of The Muni.

Our Corporate Show Sponsors

Edward Jones, Maynerich Financial, Sikich LLC, UCB, and SIU Medical (ENT) for supporting the arts in our community.

Auditions

The Hoogland Center for the Arts and their dedicated staff for providing a terrific location for auditions and rehearsals;

Dan Humphries for creating and maintaining the audition form platform;

Additional Thanks

Backstagers for their financial support that allow for the continued improvements at The Muni;

Corey Hankins, Jakob Hankins, Caleb Ragan, Traci Bagley, Izzy and Alice Diveley for assistance in the Concessions Stand. Thank you to Tom Donelan for operating the Cabaret for the Cast & Crew;

Capital City McDonald's for their generous donation of paper products;

CE Noel Photography, Madeline Boner & Jeremy Goeckner for promotional photo shoots of each show;

The staff at MetroTix for handling our ticket reservations and John Clark, Gary Moore, and Donna Ragan for working night after night in the ticket booth giving quick and cheerful service;

Our cashiering volunteers, Jerry Waters, Doug Meyer, Rob Van Meter, Barb McKean, Wanda McGarvey, and Cashton Krippel;

The City of Springfield and CWLP Lake Services for mowing our parking areas;

Our local newspapers, radio and television stations for helping to spread Muni Magic;

Springfield Theatre Centre for prop and costume assistance;

Inez Berg who works tirelessly with the Muni landscaping and flowers provide such an ideal setting for Muni Magic;

The King's Daughters Organization for their generous grant to the Senior Bus program and Gil Opferman for his continued dedication to the program's success;

Our radio media partners: NPR, Saga Communications & Woodward Community Media, for their assistance in highlighting our 2026 season.

And a very special thanks to our many volunteers who work tirelessly in every capacity to ensure that your summer is filled with music, memories and Muni Magic!

Edward Jones
MAKING SENSE OF INVESTING



maynerich
FINANCIAL
wealth management

SIKICH.

UCB
UNITED COMMUNITY BANK
The strength of Community Banking

SIU MEDICINE
EAR, NOSE & THROAT CLINIC

From rare to routine.
That's our specialty.



Some days it's a cough or cold.
Some days, it's a milestone worth remembering.
And some days, it's a fight worth winning.

**For every stage of life,
SIU Medicine is by your side.**



SIU MEDICINE

**WE DON'T JUST
TREAT YOUR KIDS.
WE TREAT THEM
LIKE KIDS.**



Scan the QR code
to learn more about
Springfield's only
children's hospital.



**Children's
Hospital**

HSHS St. John's